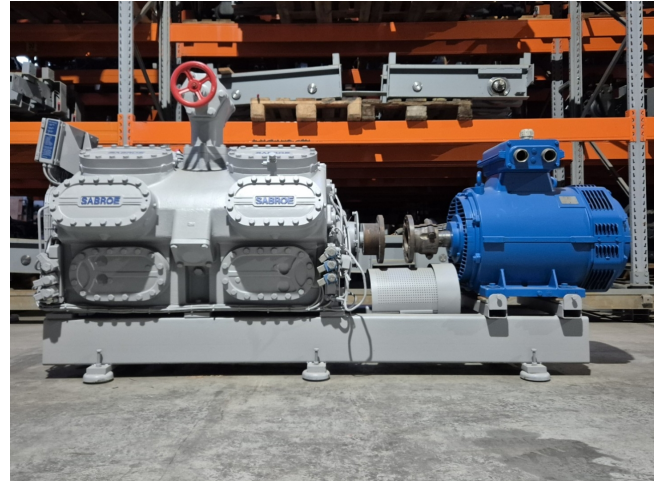


Sabroe SMC 116 S LP (Overhauled)

Specifications

Marca	Sabroe
Tipo	SMC 116 S LP (Overhauled)
Refrigerante	Freon
kW at -30°C/+40°C	155,7
kW at -40°C/+40°C	71,0
kW at -45°C/+40°C	41,5
Electromotor Specs	50/60 Hz - 90/103 kW - 1470/1770 RPM
Piston Descargador	✓
Control de capacidad	✓
Sober Bancada	✓
Mirilla	✓
Valvula Solenoide	✓
Panel de control	✓
m3 / h	882
Tamaños	2680x1000x1370 mm (LxWxH)
Stock	1



Description

Used Sabroe SMC 116 S LP (Overhauled)

Overhauled Sabroe SMC 116 S LP reciprocating compressor on Freon. Complete with a Schorch KN7250M-BB014-152 electric motor - 50/60 Hz - 90/103 kW - 1470/1770 RPM and an Unisab RT-Control. The compressor has a displacement of 882 m³/h at 1460 RPM.

*Why choose for HOSBV? Were not only the largest used refrigeration specialist in Europe, but also, we deliver all equipment including an extensive test, warranty and industrial cleaning.

*Optional we can also perform a new paint job and arrange the logistics.

